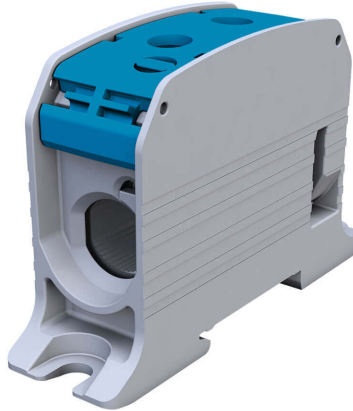


STB 95 blue

Rail-mounted screw terminal block Al/Cu 87310, single-pole, 95 mm², 2 holes

SIMBLOCK®



Catalogue number	81101003
EAN code	5907813233210
Name of item	STB 95 blue
Collective packaging	1
Unit	pc

TECHNICAL SPECIFICATIONS

Colour	blue
Width	25.5 mm
Height	57 mm
Length	93 mm
Rated cross-section (solid wire)	2 x (16...95) mm²
Rated cross-section (stranded wire)	2 x (10...70) mm²
Measurement connector (solid wire)	1 x (1.5...10) mm²
Measurement connector (stranded wire with ferrule)	1 x (1.5...6) mm²
Rated current	232 A (Cu) / 200 A (Al)
Rated voltage	1000 V AC / 1000 V DC
Number of tracks	1
Mounting	on TS 35 rail, on the mounting plate
Compliance with standards	IEC 60947-7-1 / IEC 61238-1
Compliance with directives	RoHS
Additional information	The connector has an additional measurement connector. The dedicated dust cover OSTB 95 allows easy access to the measurement connector.

ACCESSORIES

OSTB 95 grey - catalogue number 81902002

Dust cover for terminal blocks STB 95

TS 35 metallic - catalogue number 80035000
Installation rail TS 35

Noalox - catalogue number 88999006
Contact grease for Al/Al and Al/Cu connectors, 236 ml