

What's new in Multiwall series ?



Removable partitions



Firm construction



Lots of space
in the installation
pole

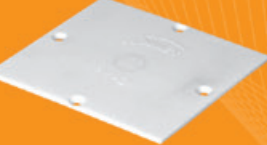
Accessories

Closing cover
(external)



PM1 | 37 162 006
Dimensions: 66x69 mm
Package: 20 szt.

Closing cover
(internal)



PM2 | 37 163 006
Dimensions: 66x71 mm
Package: 20 pcs

Signalling cover
(external)



PS1 | 37 165 008
Dimensions: 70x72 mm
Package: 20 pcs

Signalling cover
(internal)



PS2 | 37 166 008
Dimensions: 70x72 mm
Package: 20 pcs

Connection cover



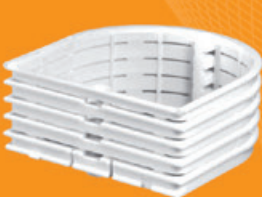
PKS60 | 37 268 006
Dimensions: 71x71 mm
Package: 10 pcs

Extension ring



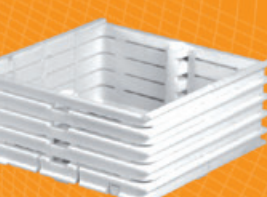
PD60x30 | 37 012 006
Distance:
5 ribs spaced every 6 mm
Package: 25 pcs

Extension ring
(external)



PDM60Z | 37 288 006
Distance:
5 ribs spaced every 6 mm
Package: 24 pcs

Extension ring
(internal)



PDM60W | 37 289 006
Distance:
5 ribs spaced every 6 mm
Package: 24 pcs

Screws



W16 | 37 086 160
Length: 16 mm
Package: 100 pcs

Screws



W25 | 37 086 250
Length: 25 mm
Package: 100 pcs

Screws

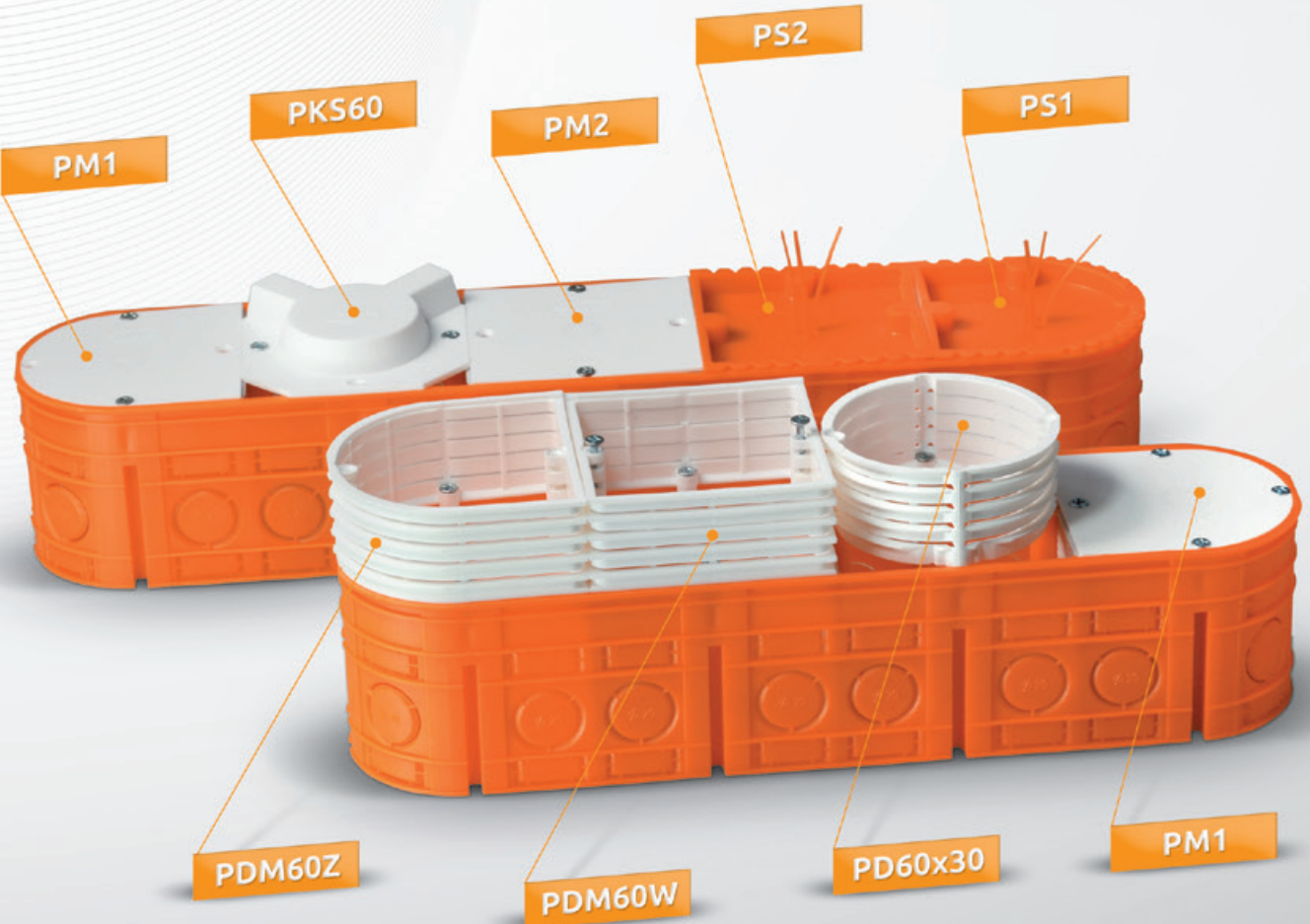
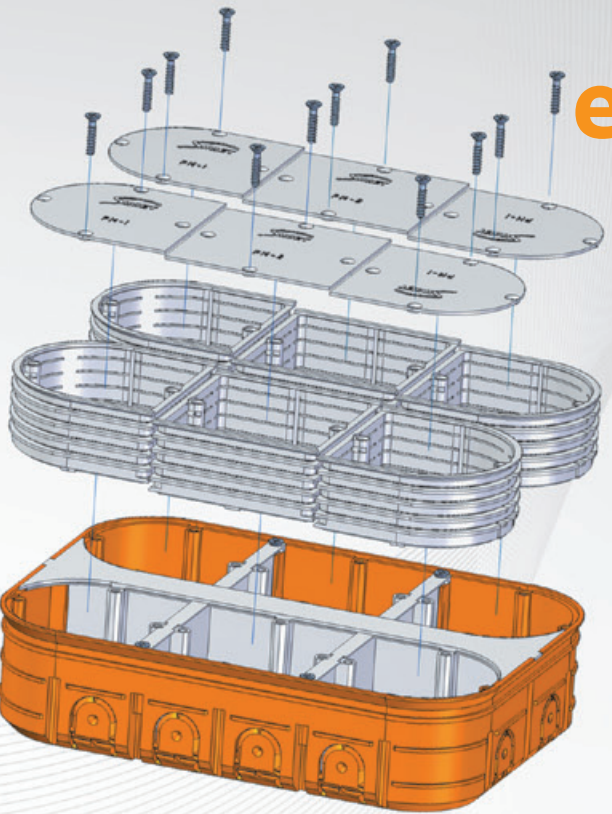
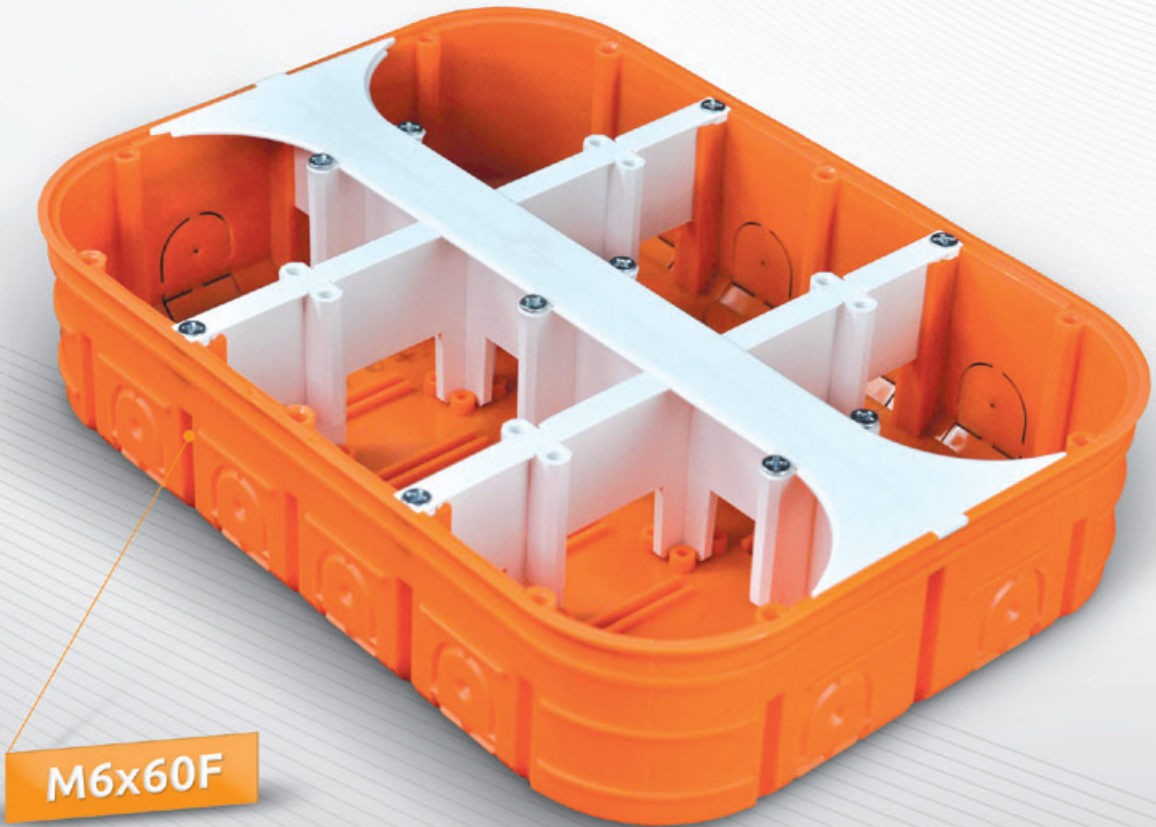
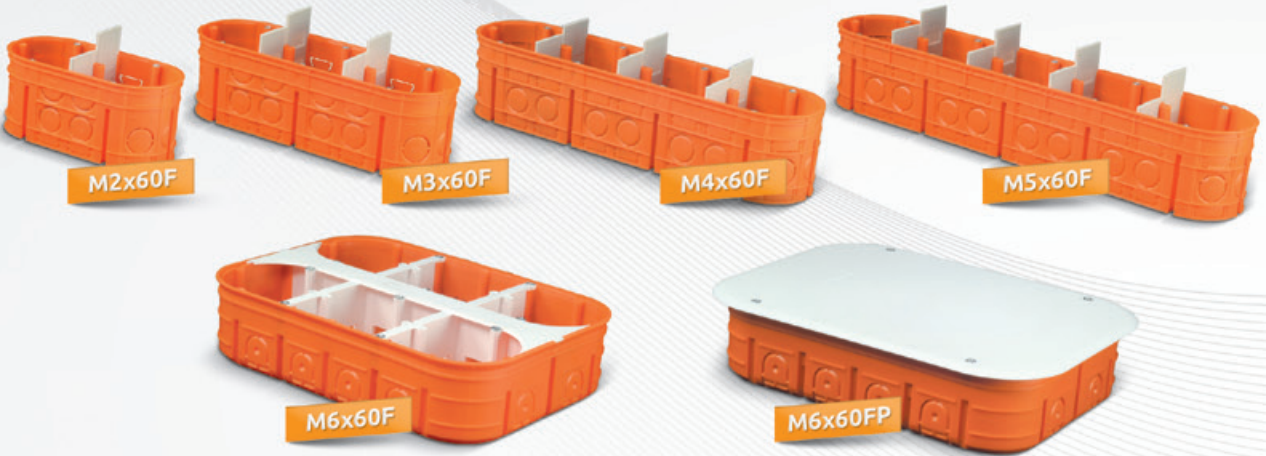


W40 | 37 086 400
Length: 40 mm
Package: 100 pcs



Continuation of the Multiwall series

Multiwall



Covers and extension rings for Multiwall series.

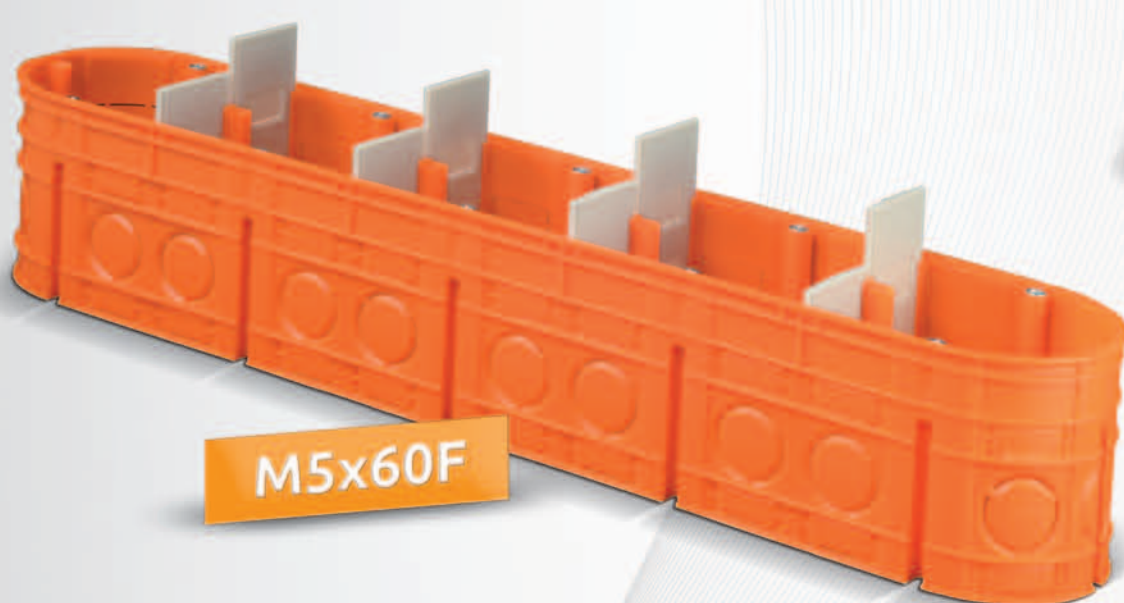
www.simet.com.pl

SIMET SA
Al. Jana Pawła II 33, 58-506 Jelenia Góra
Phone: +48 75 6471400, fax: +48 75 6472060
www.simet.com.pl

Orders:
Phone: +48 75 6471481
export@simet.com.pl

Multiwall series

Examples of its use



Multiwall series

It is a group of six universal flush mounted junction boxes.

Junction boxes are universal, as they can be used in various installation conditions – with different fittings and different types of wiring. Construction of these boxes and variety accessories allow the user to increase space by lengthening or dividing and closing the box with partitions.

The most important advantages of the series are:

- a variety of knockouts in a body of this box makes uncovering of the inside of the box convenient, both in using pipes and conduits, and in inserting wires directly to the box. A special soft material of the box and the shape of knockouts ensure fast and precise works connected with cutting out inlets and outlets of the box.
- the construction of a unique box P6x60FP gives a possibility to use two 3-pole frames with a 71 mm spacing. The frames are mounted on connectors or sockets fixed with at least two screws. A cross partition in this box is wide enough to mount most of various frames.

Accessories for this series allow the user to:

- make mounted boxes deeper, because of the application of tiles, textured plaster, wood paneling etc.
- close the boxes partially, because of the application of electric or electronic fittings, or simply to close the parts of boxes that are not used,
- use longer mounting screws in unusual socket and connector mounting.