

# Installation instruction

## Aluminium conductor

### 1.

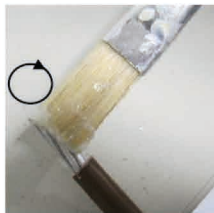
Scrape the stripped end of the conductor carefully, eg. with a knife, to remove the layer of oxide.

#### **Caution:**

Do not use brushes, files or emery paper because particles of aluminium can be deposited on other conductors.

### 2.

After removing the layer of oxide, coat the end of the conductor immediately with a neutral grease, e.g. acid- and alkali-free Vaseline, and connect it to the terminal immediately.



Repeat the above procedure if at any time the conductor is disconnected and reconnected.

#### **Maintenance note :**

The specified torques must be checked at regular intervals maintenance .