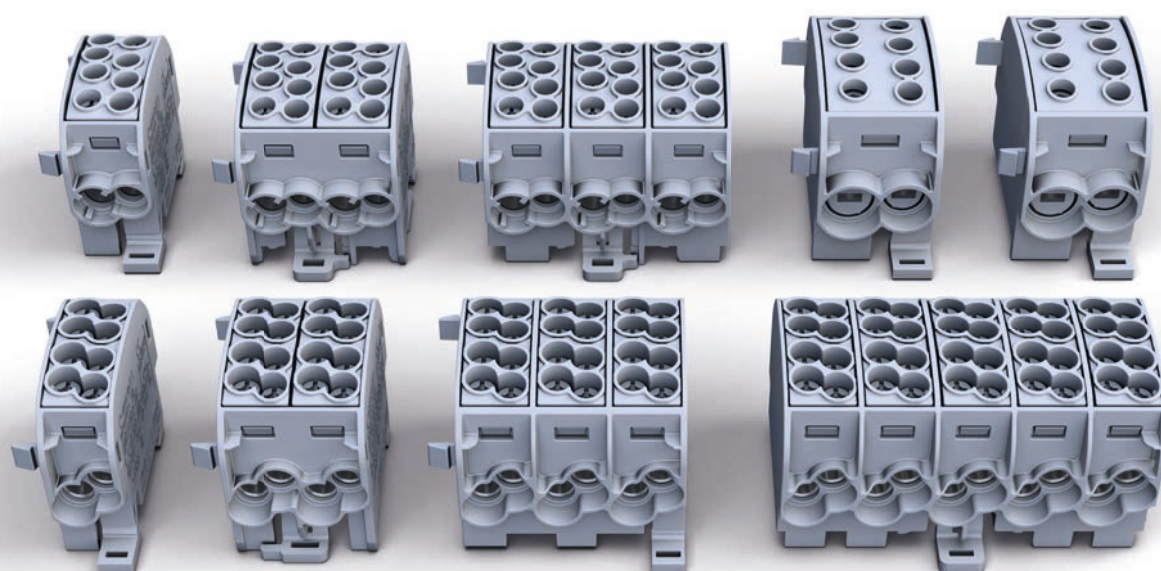


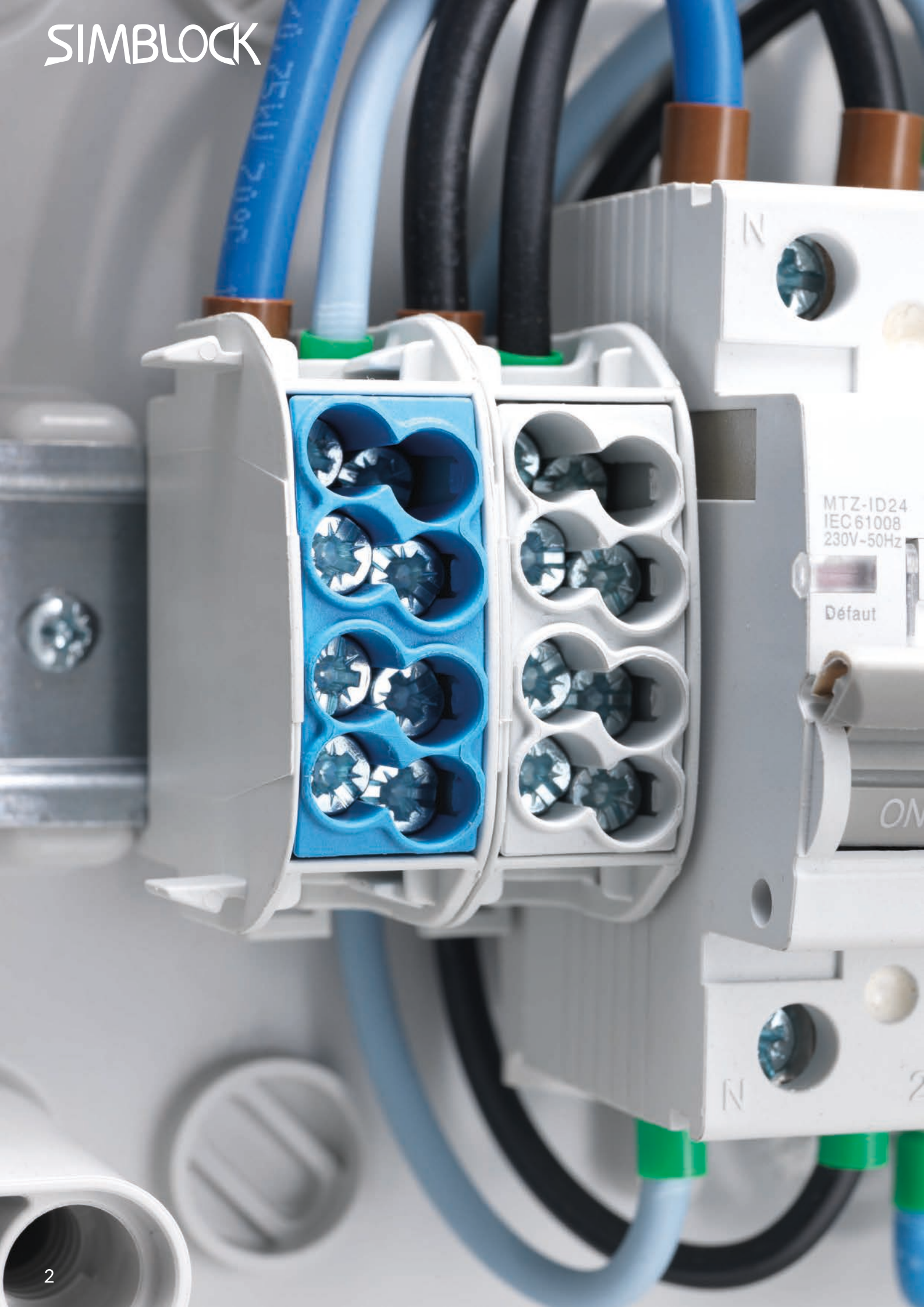
Main line branch terminals

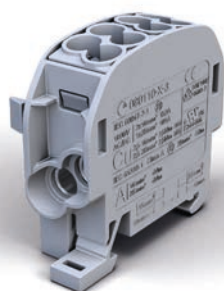
The SCB series



SIMBLOCK



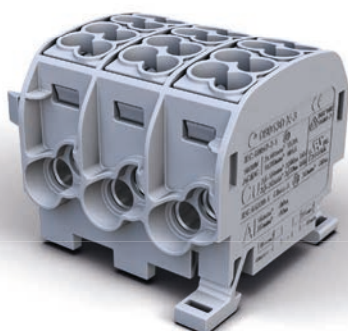




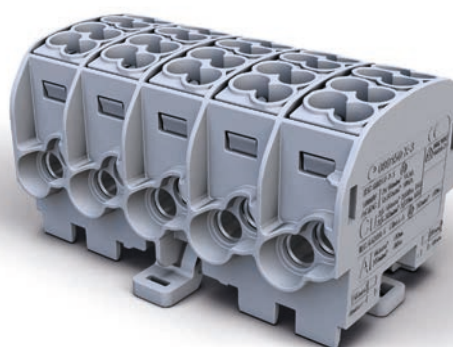
SCB 25 grey
1-pole



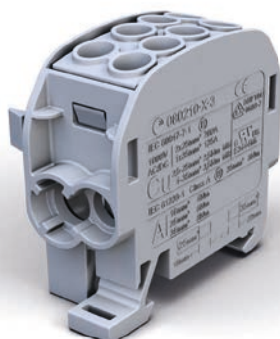
SCB 25-2 grey
1-pole



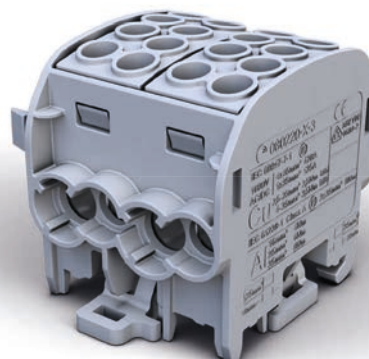
SCB 25-3X grey
3-pole



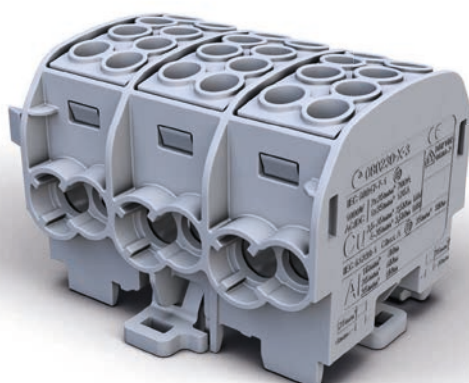
SCB 25-5X grey
5-pole



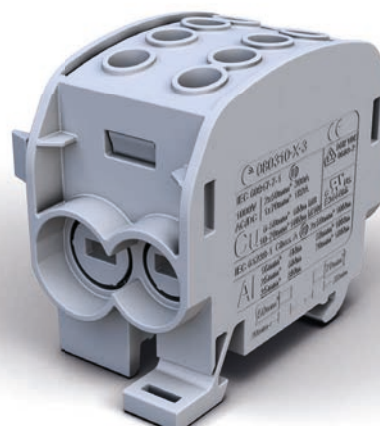
SCB 35 grey
1-pole



SCB 35-2 grey
1-pole



SCB 35-3X grey
3-pole



SCB 70 grey
1-pole



Charging station



Power distribution point



Switch boxes

Technical Data: SCB series

CHARACTERISTICS

- suitable for aluminium or copper conductors
- compact and robust construction
- all-side finger-safe
- enormous cost savings for users due to the optimized brass body
- suitable for voltages up to 1.000 V AC or DC
- modular system, stackable and combinable
- quicker installation thanks to simplified screw assembly, captive screws attached to the plastic casing and no brake screws needed
- horizontal and vertical installation possible

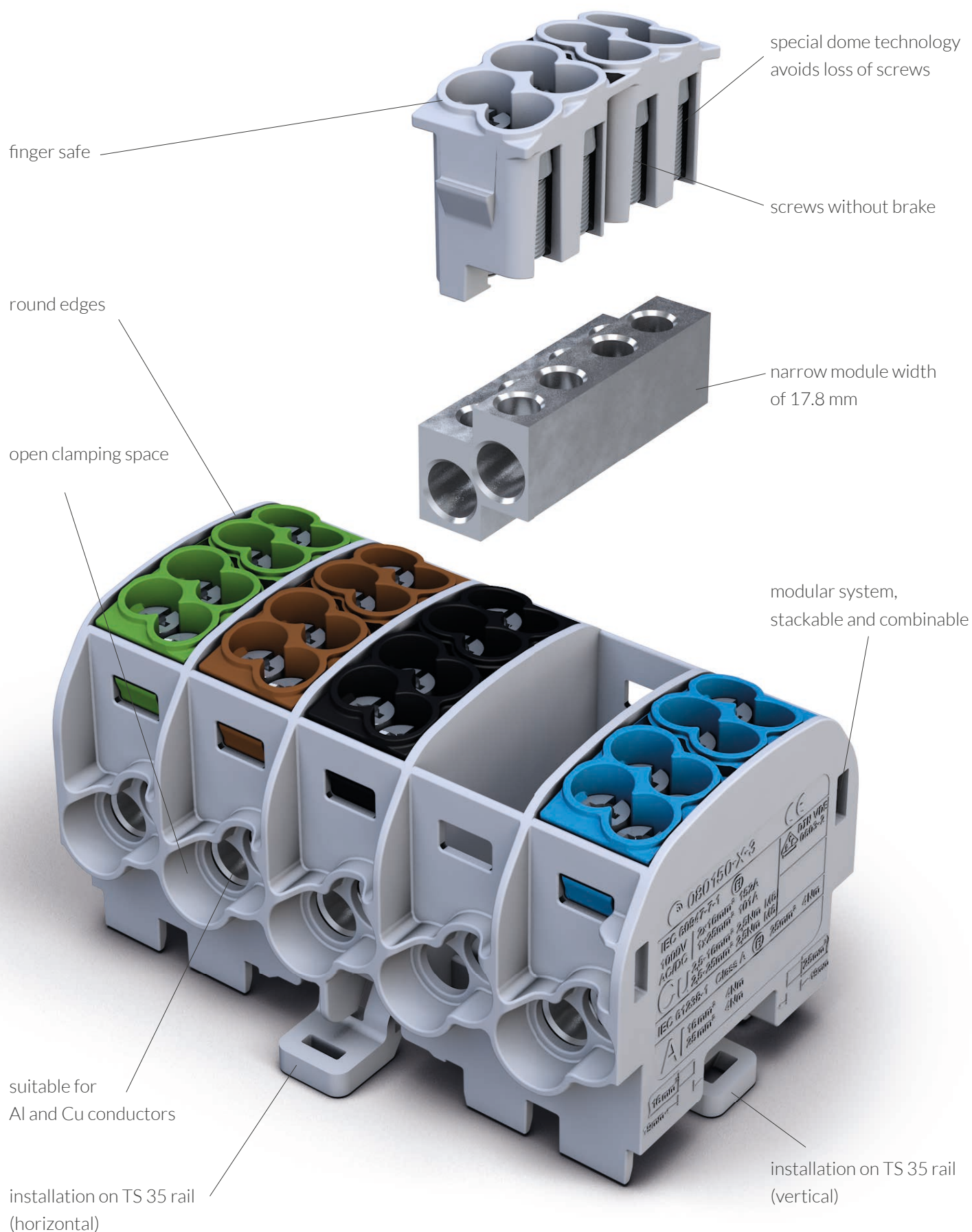
APPLICATION AREAS

- mechanical engineering
- production plants
- automation
- switch gears
- wind-mill powered plants
- solar engineering

CERTIFICATES | CONFORMITY | SAFETY



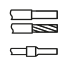
- ▶ IEC 60947-7-1
- ▶ IEC 61238-1 (Class A)
- ▶ UL-1059
- ▶ CSA C22.2 No.158-10
- ▶ DIN VDE 0603-3-1






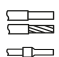
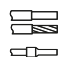
Technical Data: SCB series

SCB 25 grey, 1-pole

NOMINAL VOLTAGE	NOMINAL CURRENT	STANDARDS
1000 V AC/DC 1000 V AC/DC 690 V AC/DC 600 V AC	152 A Cu incoming 2 x 16 mm ² 100 A Al 100 A Cu 90 A Cu / 70 A Al	IEC 60947-7-1 IEC 61238-1 (Class A) DIN VDE 0603-3-1 UL-1059 / CSA C22.2 No.158-10 
MAIN LINE	BRANCH LINE	
2 x 25 mm ² - 2,5 mm ² 16 mm ² - 1,5 mm ² 	2 x 16 mm ² - 2,5 mm ² 10 mm ² - 1,5 mm ² 	


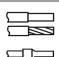
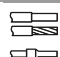


SCB 25-2 grey, 1-pole

NOMINAL VOLTAGE	NOMINAL CURRENT	STANDARDS
1000 V AC/DC 1000 V AC/DC 690 V AC/DC 600 V AC	152 A Cu incoming 2 x 16 mm ² 100 A Al 100 A Cu 90 A Cu / 70 A Al	IEC 60947-7-1 IEC 61238-1 (Class A) DIN VDE 0603-3-1 UL-1059 / CSA C22.2 No.158-10 
MAIN LINE	BRANCH LINE	
4 x 25 mm ² - 2,5 mm ² 16 mm ² - 1,5 mm ² 	4 x 16 mm ² - 2,5 mm ² 10 mm ² - 1,5 mm ² 	


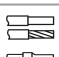
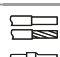


SCB 25-3X grey, 3-pole

NOMINAL VOLTAGE	NOMINAL CURRENT	STANDARDS
1000 V AC/DC 1000 V AC/DC 690 V AC/DC 600 V AC	152 A Cu incoming 2 x 16 mm ² 100 A Al 100 A Cu 90 A Cu / 70 A Al	IEC 60947-7-1 IEC 61238-1 (Class A) DIN VDE 0603-3-1 UL-1059 / CSA C22.2 No.158-10 
MAIN LINE	BRANCH LINE	
2 x 25 mm ² - 2,5 mm ² 16 mm ² - 1,5 mm ² 	2 x 16 mm ² - 2,5 mm ² 10 mm ² - 1,5 mm ² 	




SCB 25-5X grey, 5-pole


NOMINAL VOLTAGE	NOMINAL CURRENT	STANDARDS
1000 V AC/DC 1000 V AC/DC 690 V AC/DC	152 A Cu incoming 2 x 16 mm ² 100 A Al 100 A Cu	IEC 60947-7-1 IEC 61238-1 (Class A) DIN VDE 0603-3-1 
MAIN LINE	BRANCH LINE	
2 x 25 mm ² - 2,5 mm ² 16 mm ² - 1,5 mm ² 	2 x 16 mm ² - 2,5 mm ² 10 mm ² - 1,5 mm ² 	



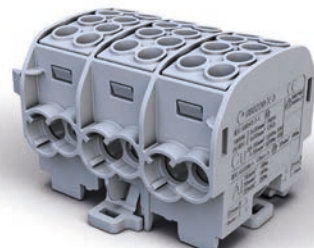
SCB 35 grey, 1-pole

NOMINAL VOLTAGE	NOMINAL CURRENT	STANDARDS
1000 V AC/DC 1000 V AC/DC 690 V AC/DC 600 V AC	202 A Cu incoming 2 x 25 mm ² 125 A Al 125 A Cu 125 A Cu / 100 A Al	IEC 60947-7-1 IEC 61238-1 (Class A) DIN VDE 0603-3-1 UL-1059 / CSA C22.2 No.158-10
		
MAIN LINE	BRANCH LINE	
2 x 35 mm ² - 4 mm ² 25 mm ² - 2,5 mm ²	2 x 25 mm ² - 2,5 mm ² 16 mm ² - 1,5 mm ²	


SCB 35-2 grey, 1-pole

NOMINAL VOLTAGE	NOMINAL CURRENT	STANDARDS
1000 V AC/DC 1000 V AC/DC 690 V AC/DC	428 A Cu incoming 4 x 25 mm ² 125 A Al 125 A Cu	IEC 60947-7-1 IEC 61238-1 (Class A) DIN VDE 0603-3-1
		
MAIN LINE	BRANCH LINE	
4 x 35 mm ² - 4 mm ² 25 mm ² - 2,5 mm ²	4 x 25 mm ² - 2,5 mm ² 16 mm ² - 1,5 mm ²	

SCB 35-3X grey, 3-pole

NOMINAL VOLTAGE	NOMINAL CURRENT	STANDARDS
1000 V AC/DC 1000 V AC/DC 690 V AC/DC	202 A Cu incoming 2 x 25 mm ² 125 A Al 125 A Cu	IEC 60947-7-1 IEC 61238-1 (Class A) DIN VDE 0603-3-1
		
MAIN LINE	BRANCH LINE	
2 x 35 mm ² - 4 mm ² 25 mm ² - 2,5 mm ²	2 x 25 mm ² - 2,5 mm ² 16 mm ² - 1,5 mm ²	

SCB 70 grey, 1-pole

NOMINAL VOLTAGE	NOMINAL CURRENT	STANDARDS
1000 V AC/DC 1000 V AC/DC 690 V AC/DC 600 V AC	300 A Cu incoming 2 x 50 mm ² 185 A Al 160 A Cu 160 A Cu / 120 A Al	IEC 60947-7-1 IEC 61238-1 (Class A) DIN VDE 0603-3-1 UL-1059 / CSA C22.2 No.158-10
		
MAIN LINE	BRANCH LINE	
2 x 70 mm ² - 10 mm ² 50 mm ² - 6 mm ²	2 x 50 mm ² - 6 mm ² 35 mm ² - 4 mm ²	



Electrotechnical equipment producer

www.simet.com.pl

SIMET S.A.

Al. Jana Pawła II 33
58-506 Jelenia Góra, Poland

Domestic sales:

tel.: +48 75 64 71 492
+48 502 531 789
fax.: +48 75 64 72 062
sprzedaz@simet.com.pl

Foreign sales:

tel: +48 75 64 71 481
export@simet.com.pl

