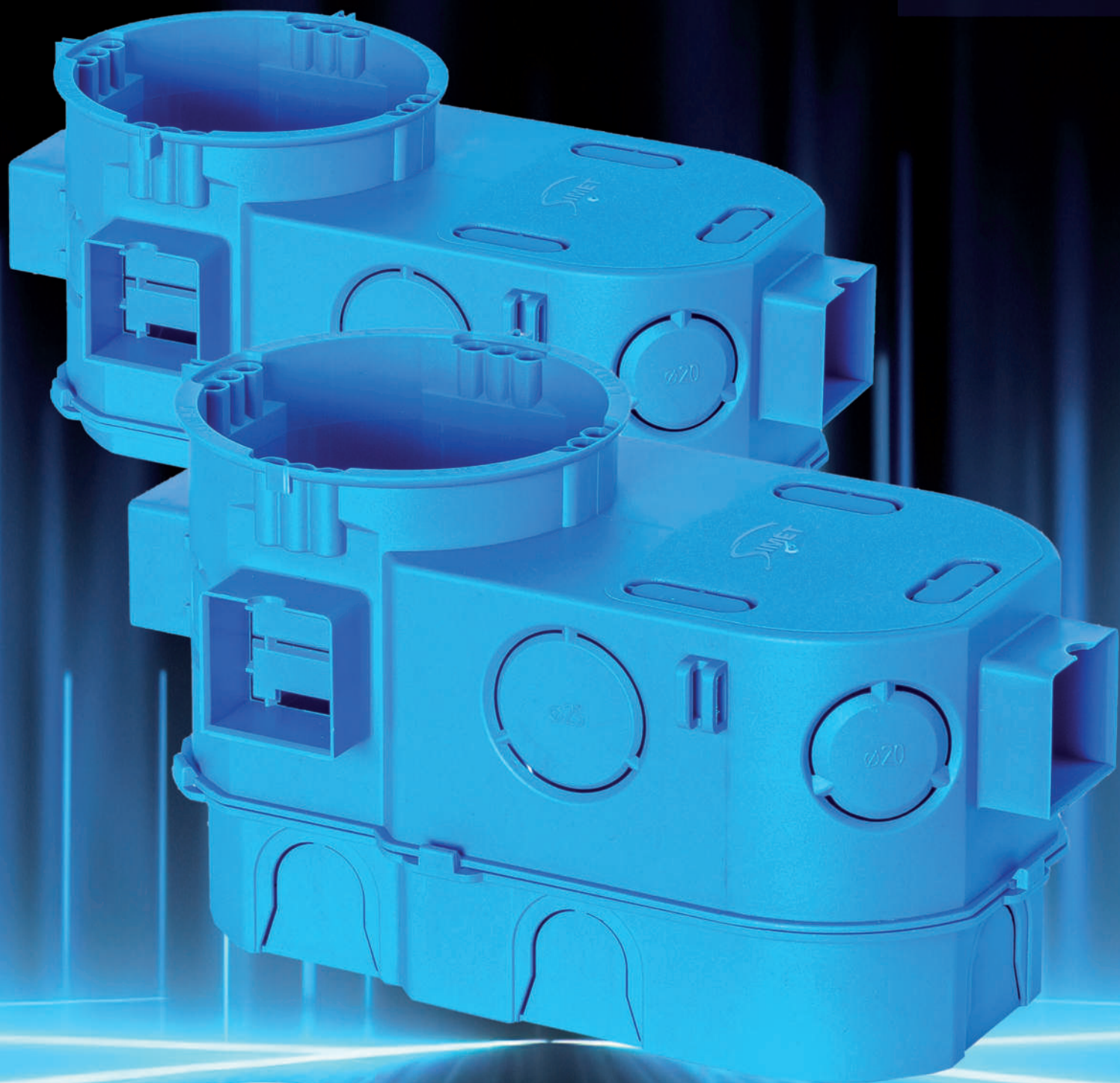


Flush mounted junction boxes for electronics
SE2x60D | SE2x60G

Your electronics in good hands

2024



simet.com.pl

SE2x60D | SE2x60G



A larger marker hole for mounting foam

6 knockouts for inserting conduits Ø20 mm

2 knockouts for cable entry from the bottom of the box: Ø20 and Ø25 mm

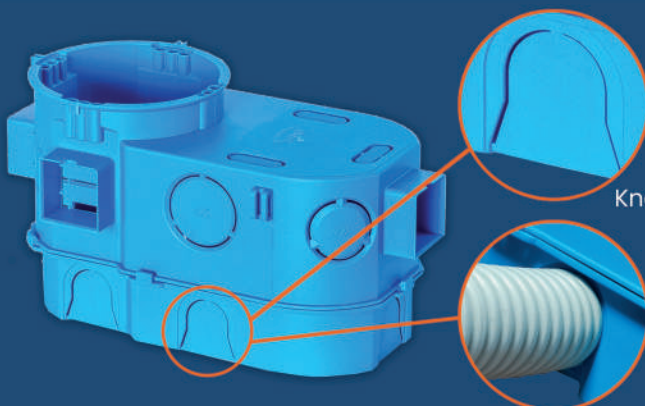
Can be combined with other serial boxes from Simet

Stabilizing latches for mounting the box in parallel systems

Triple screw holes allows for mounting corrections of electrotechnical equipment

Knockouts for flat cables

Knockouts in the body for cables: Ø16, Ø20 and Ø25 mm



Knockouts for conduits in **SE2x60G** box

Flush mounted junction boxes for electronics



PA 6

Technical data

	SE2x60D	SE2x60G
Heat resistance: 960 °C	960 °C	960 °C
Material: PA 6	PA 6	PA 6
Catalogue no.: 34 117 203	34 159 203	34 159 203
Collective pack.: 10 pcs	5 pcs	5 pcs
Dimensions [mm]: 128/63/60	128/63/60	128/81/60