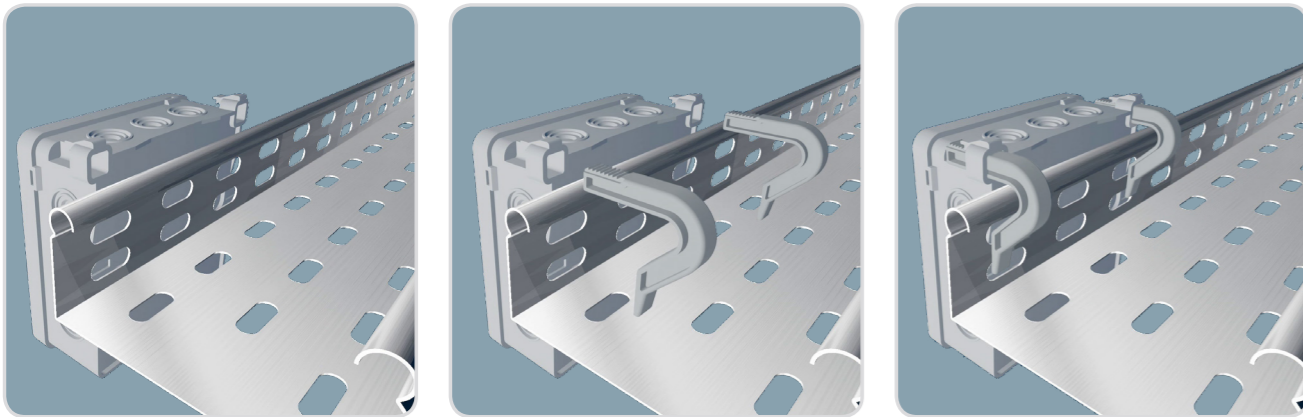


METHOD OF INSTALLATION



SURFACE JUNCTION BOXES WITH A HOOK



www.simet.com.pl



ATTRIBUTES

QUICK INSTALLATION

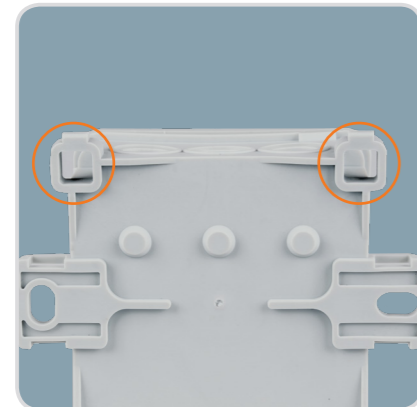
An innovative method of installation with the use of hooks, which is reserved in patent office. Installation on a cable route takes less than 10 seconds.

NEW SOLUTION

Holes in junction box's bottom for attaching the hooks.

MOUNTING BRACKET

Bracket for mounting with the use of bands or Ø 6mm screws that facilitate the installation.



STIFF COVER

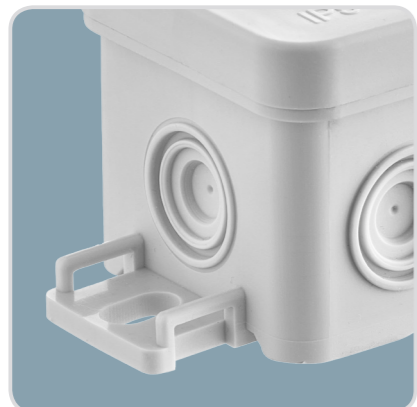
The self-locking cover is made of polypropylene. Its smooth surface allows for placement of the description of the installation.

LATERAL KNOCKOUT

One central knockout in box NS8.

PERFORATION

An additional opening in the packaging flap enables repeated use of the collective packaging.



A video showing the way of box installation.



FASTBOX & HOOK

Issue February 2021

SIMET S.A.

Al. Jana Pawła II 33
58-506 Jelenia Góra, Poland

Domestic sales:

tel.: +48 75 64 71 492
fax.: +48 75 64 72 062
sprzedaz@simet.com.pl

International sales:

tel: +48 75 64 71 481
export@simet.com.pl

WHITE SERIES

GREY SERIES

BLACK SERIES

NS5



NS6



NS5



NS6



NS5



NS6



NS7



NS8



NS7



NS8



NS7



NS8



HNS



NS5

NS6

NS7

NS8

HNS

Cutter NS

TECHNICAL DATA

Catalogue number / Colour:	○ 35 360 106 / white ● 35 360 102 / grey ● 35 360 107 / black	○ 35 346 106 / white ● 35 346 102 / grey ● 35 346 107 / black	○ 35 349 106 / white ● 35 349 102 / grey ● 35 349 107 / black	○ 35 357 106 / white ● 35 357 102 / grey ● 35 357 107 / black	* white for a special request ● 35 345 102 / grey * black for a special request	● 37 400 803 / blue
Resistance to heat:	650 °C	650 °C	650 °C	650 °C	650 °C	-
Weight:	38,4 g	46,3 g	58,6 g	28,9 g	2,8 g	5,2 g
Collective packaging:	110 pcs	90 pcs	60 pcs	180 pcs	10 pcs	10 pcs
Material:	PE - body, PP - cover	PE - body, PP - cover	PE - body, PP - cover	PE - body, PP - cover	PA6	PC
External dimensions:	75 mm / 40 mm / 75 mm	85 mm / 40 mm / 85 mm	100 mm / 40 mm / 100 mm	45 mm / 40 mm / 85 mm	7,8 mm / 41,7 mm / 43,8 mm	62 mm / 33 mm



Material:

PE - polyethylene
PP - polypropylene

PA6 - polyamide
PC - polycarbonate



Cutter - NS

Cutter for knockouts
Ø7 mm, Ø11 mm, Ø15 mm.

The cutter makes it easy
opening the cover.

